

HUD-DOT-EPA Partnership for Sustainable Communities

League of American Bicyclists

March 10, 2010



Growth is coming...

- Between 2000 and 2025, U.S. population will add 61 million people and 24 million households
- 1/3 of all currently developed land has been built on since 1976
- By 2030, we will build half as much again as we have to date



Growth Patterns Influence Community Goals

- Public health
- Housing affordability
- Economic development
- Efficient use of tax dollars
- Open space and farmland preservation
- Traffic congestion
- Greenhouse gas emissions
- Air and water quality
- Revitalization of downtowns & existing neighborhoods
- Community character
- Quality of life



Three distinct growth trends over the last 50 years

1. Employment and population growth heavily favored medium and large metropolitan regions over nonmetropolitan areas.
2. Within metropolitan regions, most growth occurred in low-density development at the fringe of urbanized areas.
3. Emphasis on automobile travel at the expense of other modes.



We've known about this pattern and its impacts for a long time.

It has been studied – a lot.



Articles Covers
Search Search [Advanced Search](#)
[See All Covers](#)
[Search Tips](#)

Search From: Jan 1 1923 through Dec 31 2005

Environment

The Costs of Sprawl

Print E-Mail Save Popular

>Subscribe to TIME

Nov. 4, 1974

In an era of environmental concern, it is common knowledge that the use of land makes sense. But does pay? In many ways, yes, says a 278-page

November 4, 1974

ALSO IN THIS ISSUE

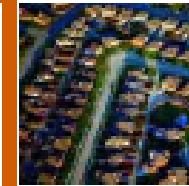
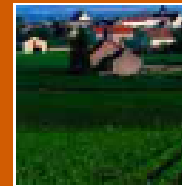
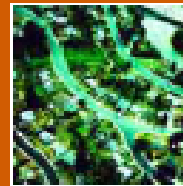
Nov. 4, 1974



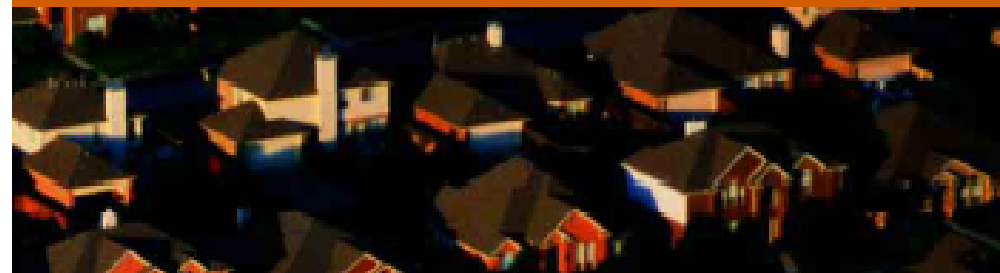
"The results of the study . . . show a surprising consistency: 'planning' to some extent, but higher densities to a much greater extent, result in lower economic costs, environmental costs, natural resource consumption, and some personal costs for a given number of dwelling units."



Sponsored by
the Federal
Transit Administration



Costs of Sprawl—2000

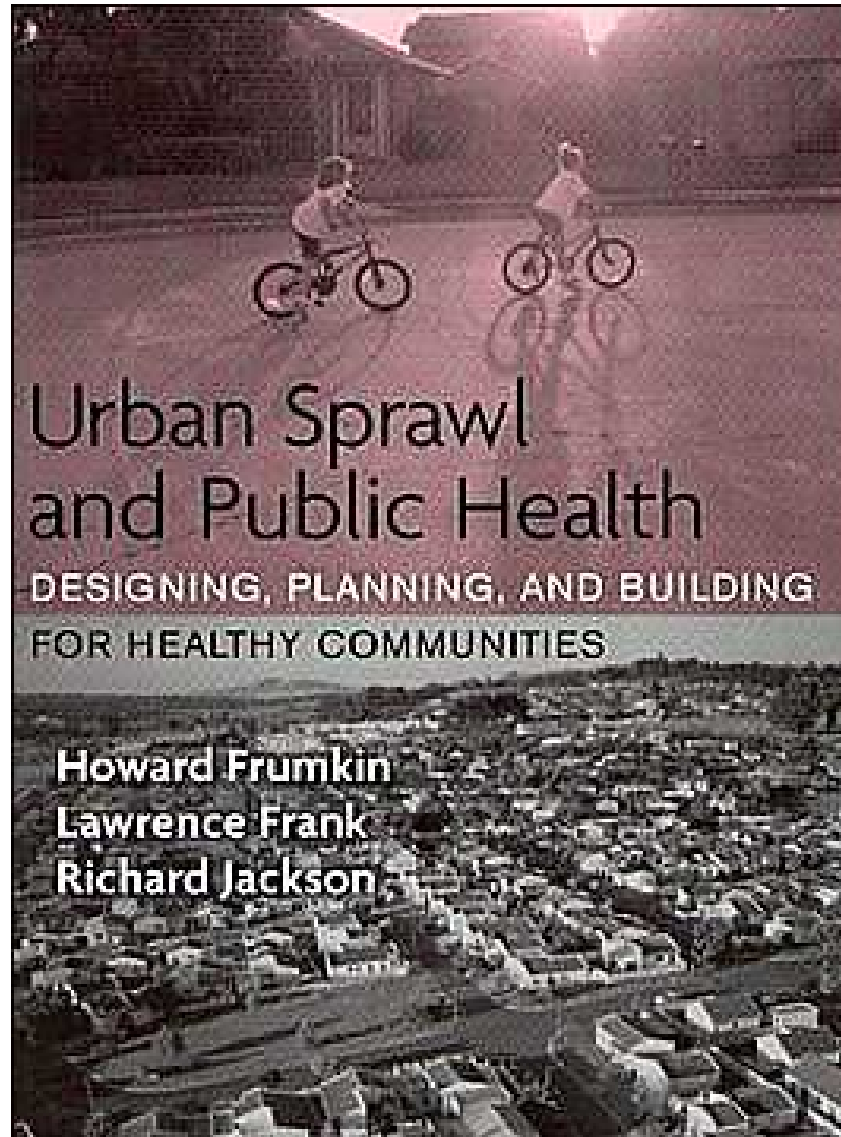


“More-compact development patterns produce savings that are both profound and measurable.”



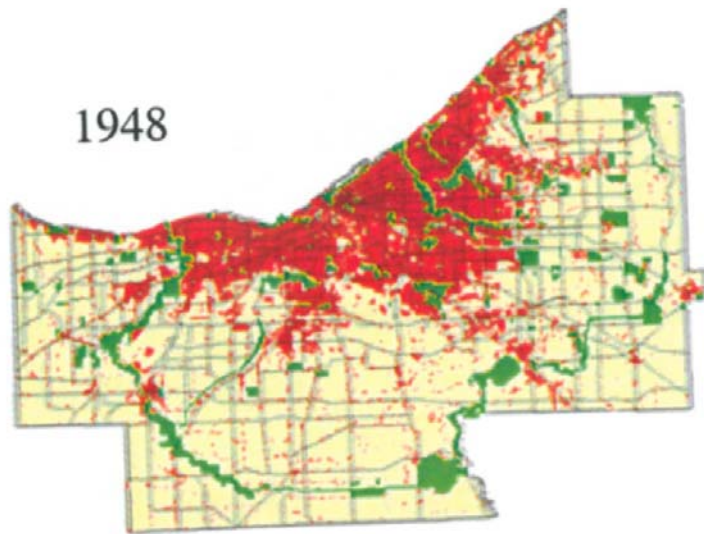
TRANSPORTATION RESEARCH BOARD

NATIONAL RESEARCH COUNCIL

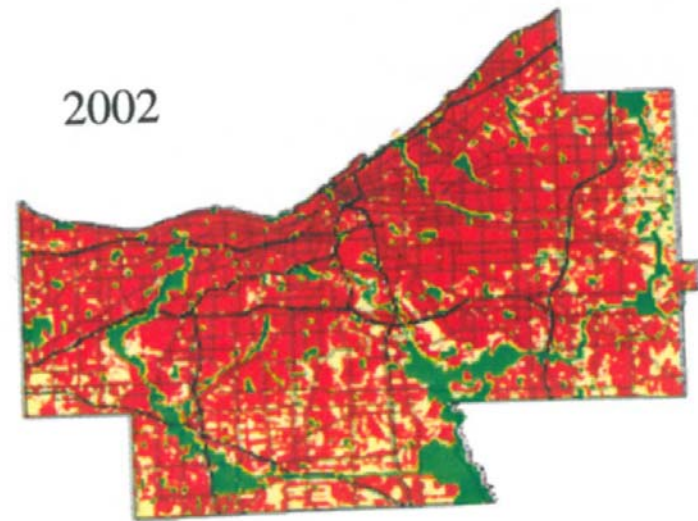


“We are only now realizing that the way we have built ... over the last half century has been extremely costly...to human health and well-being.”

Some American communities have been growing in size but not in population



U.S. Census 1950
1,389,582 pop.

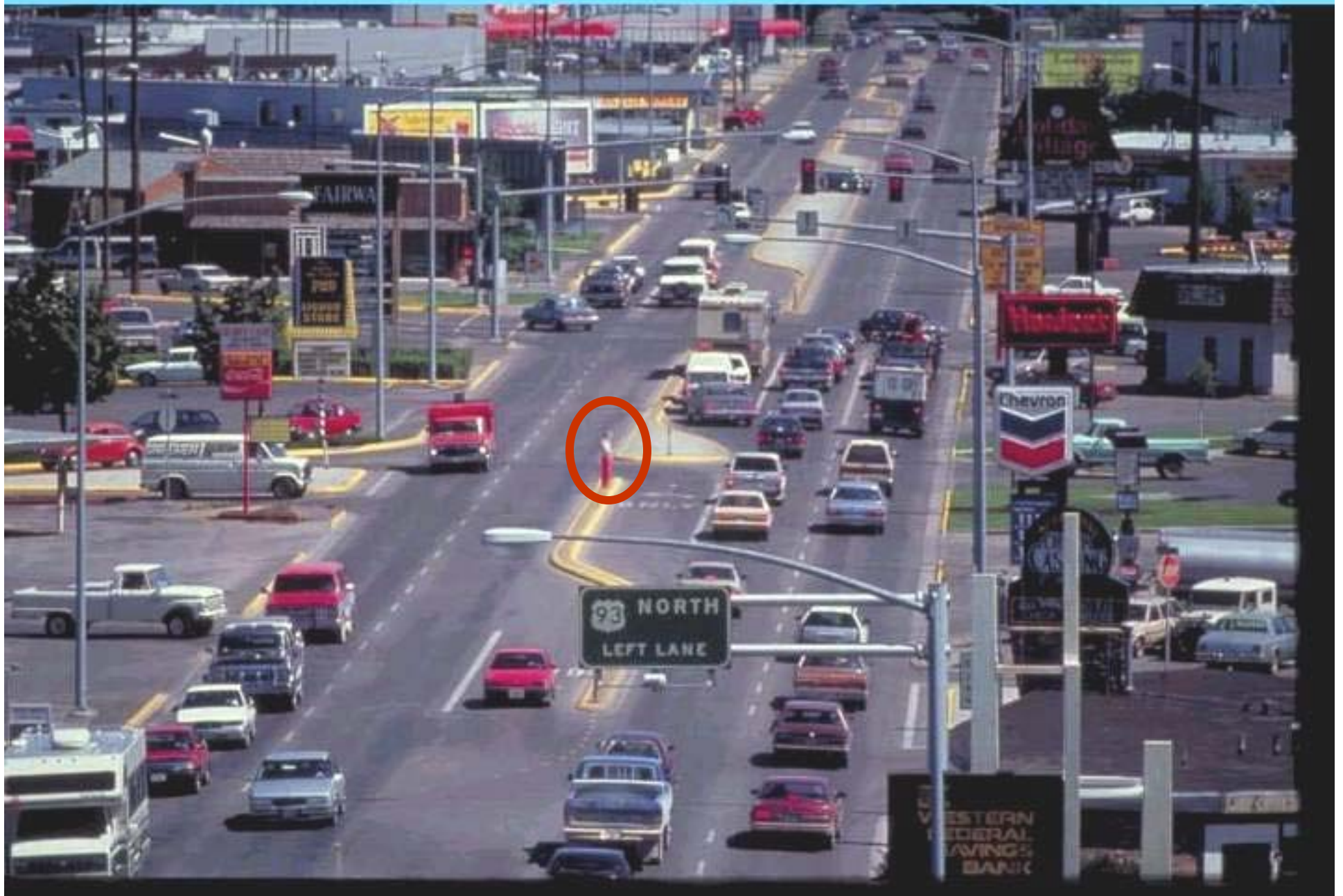


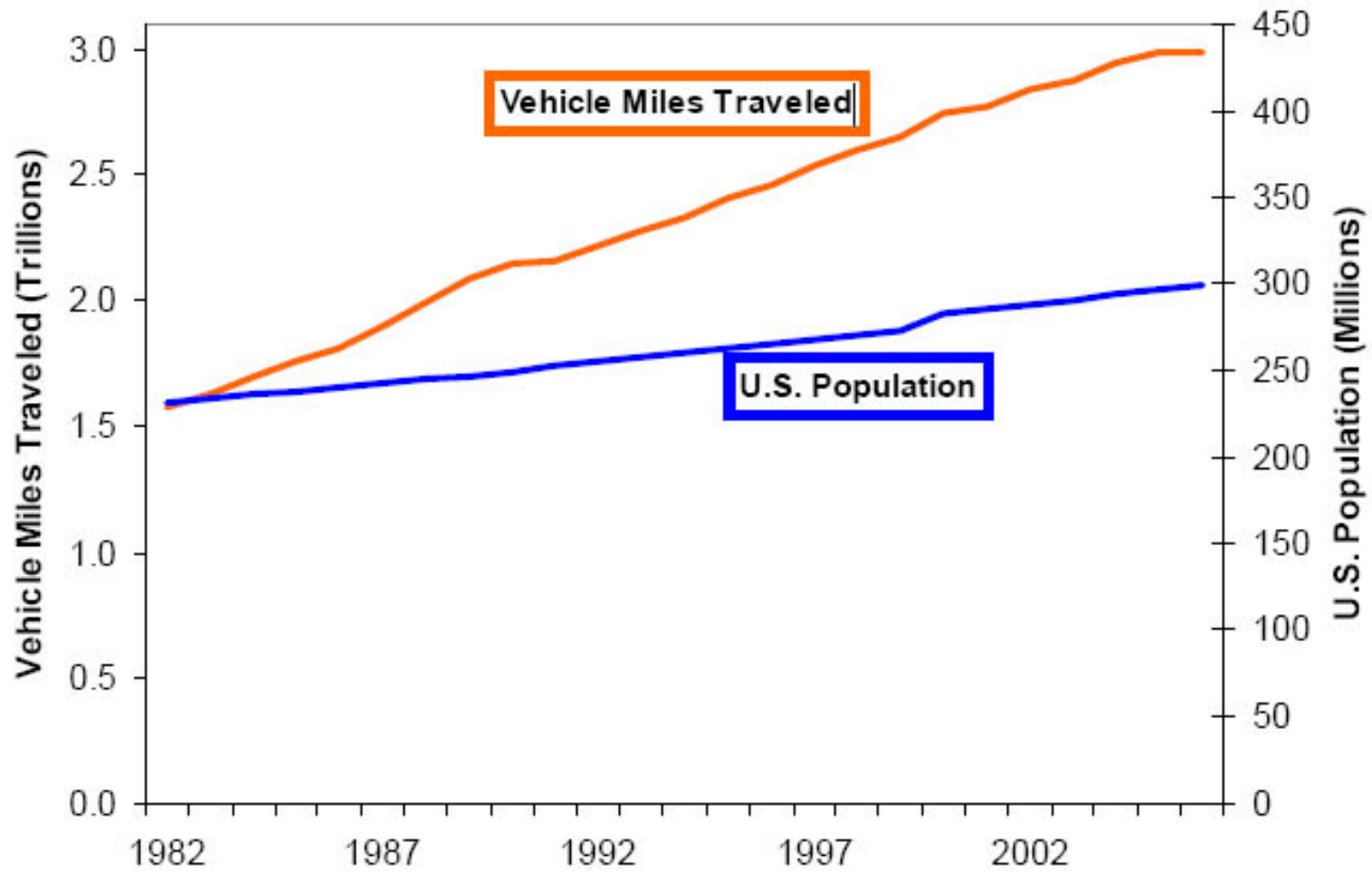
U.S. Census 2002
1,393,978 pop.



Source: Cuyahoga Co Land Use Maps – Cuyahoga County, Ohio, Planning Commission

A Legal Highway





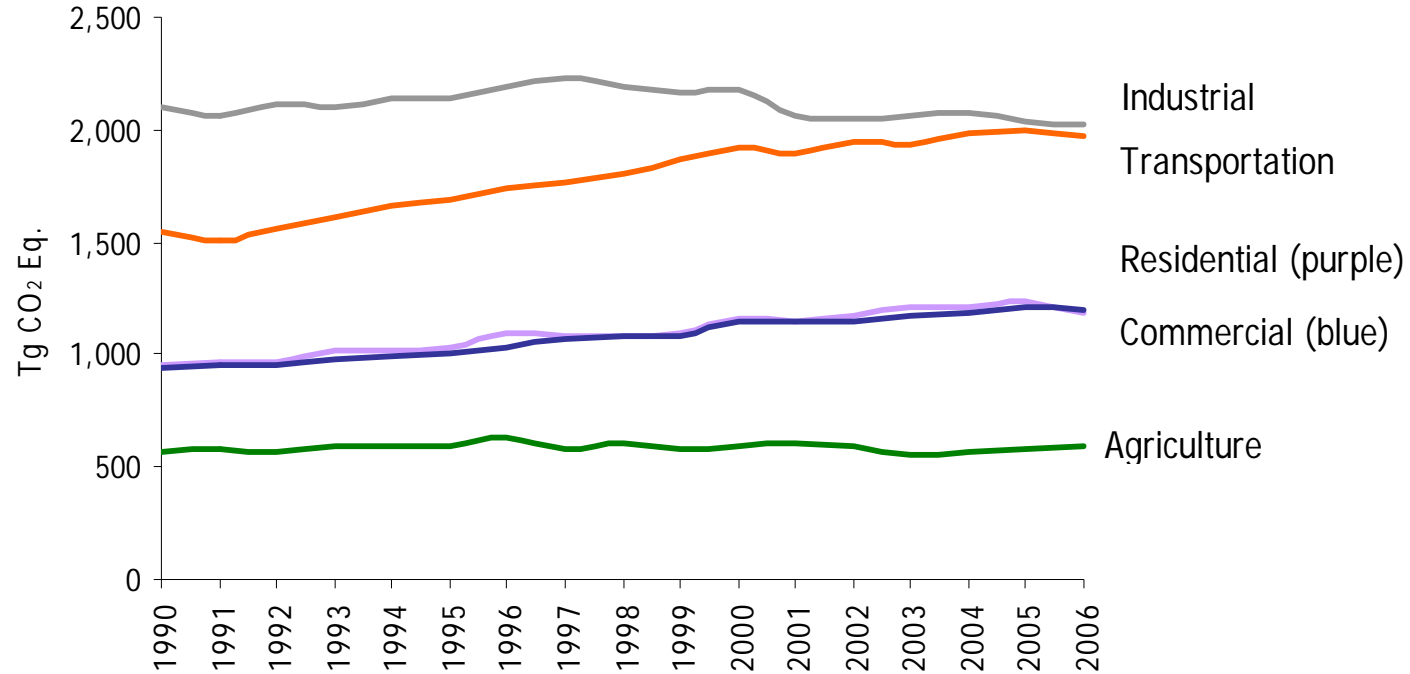
Greenhouse Gas Emissions

Transportation sector is the fastest growing contributor of CO₂ emissions



Greenhouse Gases (GHGs)

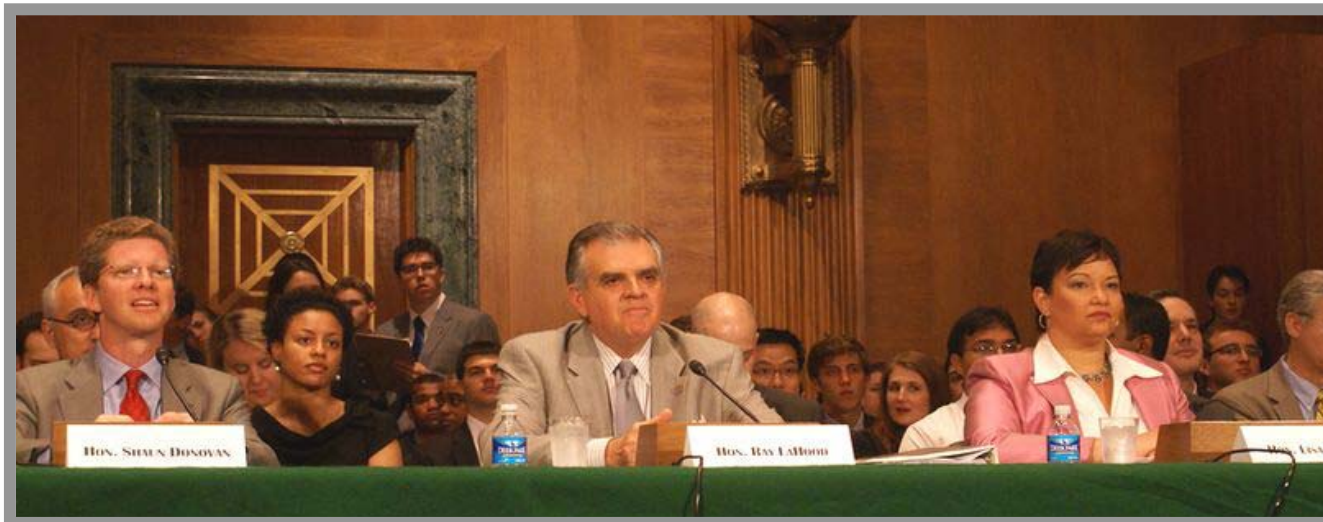
U.S. GHG Emissions by Economic Sector, 1990-2006



Partnership for Sustainable Communities

Mission: To meet the President's challenge for our agencies to work together to encourage and fully assist rural, suburban, and urban areas to build sustainable communities, and to make sustainable communities the leading style of development in the United States.

The Partnership is focused on ensuring that federal investments, policies, and actions do not subsidize sprawl and, instead, support development in more efficient and sustainable locations.



Secretary Shaun Donovan, Housing and Urban Development

June 16, 2009

“...we need to integrate our housing and transportation systems in a way that encourages smart land use, making our communities ... more sustainable for the decades to come.”



Administrator Lisa Jackson, U.S. Environmental Protection Agency

June 16, 2009

“There’s no need to wait for some technological breakthrough ... **The technology to help people drive less exists today—it’s called smart growth.** We know that investing in public transportation, making communities more walkable, and creating more housing near job centers results in less driving.”



Secretary Ray LaHood, U.S. Department of Transportation

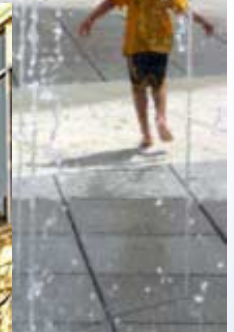
June 16, 2009

“Our goal is to build livable communities, where safe, convenient and affordable transportation is available to all people, regardless of what mode they use. **For the past 50 years, most government investment in transportation has undermined this goal.**”



Guiding Principles

1. Provide more transportation choices.
2. Promote equitable, affordable housing.
3. Enhance economic competitiveness.
4. Support existing communities.
5. Coordinate policies and leverage investment.
6. Value communities and neighborhoods.



President Barack Obama: January 21, 2010



“When it comes to development, it's time to throw out old policies that encouraged sprawl and congestion, pollution, and ended up isolating our communities in the process.

We need strategies that encourage smart development linked to quality public transportation, that bring our communities together.

That's why we'll improve our Partnership for Sustainable Communities by working with HUD, EPA, and the Department of Transportation in making sure that when it comes to development, housing, energy, and transportation policy go hand in hand.”



Progress To Date

- Three-Agency and White House Tour
- HUD policy change on Brownfields allowing financing for multi-family units built on former Brownfield sites that have been cleaned
- Executive Order on Federal Facilities (**EO 13514**). Partnership work to ensured strong language on location
- DOT TIGER Grant Program



Progress To Date

- EPA Smart Growth Implementation Assistance program now includes HUD and DOT on teams
- Sustainable Site Pilots in 5 cities
- Pilot program with three states on water infrastructure
- All three agencies will make sure this effort provides equitable development for disadvantaged communities and environmental justice for all communities



Progress To Date

Sustainable Communities Planning Grant Program

Background

- In FY2010 budget, Congress appropriated \$150 million to HUD for a Sustainability Initiative
- **\$100 million** is available for the Planning Grant Program
- One component of an integrated federal strategy

Goal

- Support regional planning efforts that integrate housing, environmental, economic development, and transportation decision-making
- Empower jurisdictions to consider the interdependent challenges of economic growth, social equity, and environmental impact simultaneously



Partnership Priorities for 2010

1. Address more than 300 recommendations received from states and various stakeholder groups;
2. Align funding and get money out the door;
3. Show visible progress in coordinating transportation, housing and environmental planning;
4. Build regional capacity.



Households are Changing

<u>Household Type</u>	<u>1960</u>	<u>2005</u>	<u>2040</u>
US			
HH with Children	48%	32%	26%
HH without Children	52%	68%	74%
<i>Single/Other HH</i>	13%	31%	34%



Source: Arthur C. Nelson, Presidential Professor & Director of Metropolitan Research, University of Utah.

Share of Growth 2005-2040

<u>US HH Type</u>	<u>Growth</u>	<u>Share</u>
HH Growth	54M	
With children	7M	14%
<u>Without children</u>	47M	<u>86%</u>

Source: Arthur C. Nelson, Presidential Professor & Director of Metropolitan Research, University of Utah.

Findings: 1/3 want smart growth products

- ▶ Reviews of existing studies on consumer demand...
- ▶ Survey's conducted by Robert Charles Lesser & Co. LLC...
 - Consistently find that about a third of the market prefers smart growth products
 - Demand increases with shorter commute
- ▶ Share of the market growing due to
 - Demographic trends and
 - Changing buyer preferences (lifestage changes)



Indicator Species

Species that can leave clues about the state of the ecosystem are known as indicator species. Their decline may indicate a disturbance that alters the ecosystem.



“The pedestrian/
bicyclist is the
indicator
species for a
healthy,
livable, place.”



www.pedbikeimages.org / DanBurden



Web: www.epa.gov/smartgrowth



U.S. Environmental Protection Agency

Smart Growth

[Contact Us](#) **Search:** All EPA This Area

You are here: [EPA Home](#) » [Environmental Management](#) » [Smart Growth](#)

- Smart Growth Home
- Basic Information
- Publications
- Grants & Funding
- Making Smart Growth Happen
- Resources
- Newsroom
- Related Links

EPA helps communities grow in ways that expand economic opportunity, protect public health and the environment, and create and enhance the places that people love. Through research, tools, partnerships, case studies, grants, and technical assistance, EPA is helping America's communities turn their visions of the future into reality.

Announcements

EPA is a sponsor of the "Reclaiming Vacant Properties: Strategies for Rebuilding America's Neighborhoods" [EXIT Disclaimer](#) conference, which will take place September 24-25, 2007, in Pittsburgh, PA.

EPA is accepting applications for the [Excellence in Building Healthy Communities for Active Aging](#) awards. The awards recognize outstanding community planning and strategies that support active aging. Applications are due Oct. 17, 2007.

About Smart Growth

Learn about smart growth issues and [environmental benefits](#). Find information about specific [topics, resources, and examples of smart growth development](#), including the [National Award for Smart Growth Achievement](#).

Grants and Funding

Find out about financial assistance available to organizations and communities.

Making Smart Growth Happen

Find tools and information to help you



Silver Spring, Md., has revived its downtown, bringing back people and businesses and creating a new gathering place for the region.

Newsroom

- Six communities selected to receive Smart Growth Implementation Assistance (7/07)

[more....](#)

For more information...

- ◆ My Contact information:
- ◆ Tim Torma
- ◆ torma.tim@epa.gov
- ◆ 202-566-2864

- ◆ www.epa.gov/smartgrowth

